

# TAX WITHHOLDING & REPORTING IN GAMING OPERATIONS AND ACCOUNTS PAYABLE IN GAMING ESTABLISHMENTS

**This 2009 training program will help you  
improve tax compliance and protect your organization.**

**This year, offered at three locations:**

**San Jose CA • June 24 and 25**

**St. Louis MO • July 15 and 16**

**Windsor CT • September 23 and 24**

**Earlybird discount registration available now!**

## **Learning Objectives**

- Identify the full range of payments required to be reported to the IRS on Forms 1099 and 1042-S
- Recognize when backup withholding of tax is required in Accounts Payable, and apply the 28% withholding rule
- Identify when to use Form W-2G and when to use Form 1099-MISC and how to report gambling winnings including slots, bingo, keno, table games, sweepstakes, lotteries, wagering pools, drawings, contests, tournament prizes and other events
- Withhold the correct amount of tax from gaming winnings
- Identify your payee according to regulatory requirements for U.S. persons and foreign visitors
- Apply best practices in preparation of federal Forms 1099, W-2G, 5754, 1042-S, 945, and 1042

## ***Including these hot issues:***

- ***IRS focus on documenting and withholding tax from foreign players and foreign service providers***
- ***New rules for reporting poker tournament winnings***
- ***Depositing and tracking withheld federal tax to avoid out-of-balance penalties and interest***
- ***State requirements for tax reporting***

**COKALA**

TAX INFORMATION REPORTING SOLUTIONS, LLC

**Your Instructor:**  
**Jerri LS Langer, JD, LLM**

**Jerri LS Langer** is a Principal in the COKALA Tax Group and is a nationally recognized tax information reporting and withholding advisor with experience serving gaming operations as well as accounts payable and other specialized tax areas. She received her JD and LLM in Taxation from the University of Florida College of Law and is a member of the Florida and Michigan bars. She is currently serving her second appointment to the IRS Commissioner's Information Reporting Program Advisory Committee (IRPAC). Jerri was the founding Government Relations Chair for the National Association of Tax Reporting and Payroll Management (NATRPM) and currently serves on the NATRPM Board. Prior to joining as a partner in the Cokala group, Jerri served as a Director in Deloitte & Touche, and subsequently as a Director in Balance Consulting.

This is a group educational seminar, presented live. There is no prerequisite course requirement, and no advance preparation is required. The program level is appropriate for basic learning. Participants with advanced levels of experience will also receive benefits from the course through important updates and Q&A with the instructor. To register for this course, contact COKALA Tax Information Reporting Solutions at 734.396.9041 or use the registration form in this brochure, or see [www.cokala.com](http://www.cokala.com). For information about refund, complaint and program cancellation policies, please contact our office at 734.396.9041.



**CPE CREDITS:**

**15 for the 2-day program.**

**7.5 for either of the 1-day programs.**

COKALA Tax Information Reporting Solutions, LLC, is registered with the National Association of State Boards of Accountancy (NASBA) as a sponsor of continuing professional education on the National Registry of CPE Sponsors. State boards of accountancy have final authority on the acceptance of individual courses for CPE credit. Complaints regarding registered sponsors may be addressed to the National Registry of CPE Sponsors, 150 Fourth Avenue North, Suite 700, Nashville, TN, 37219-2417. Web site: [www.nasbatools.com](http://www.nasbatools.com).

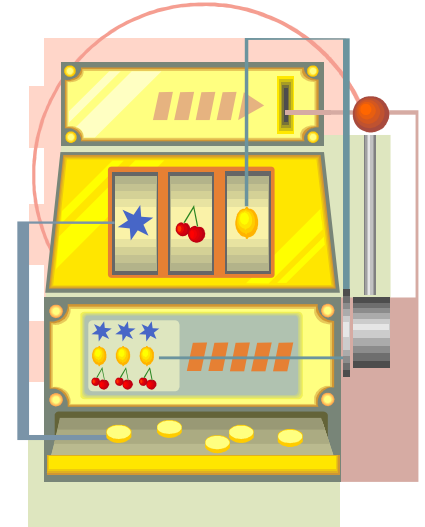
# Tax Withholding & Reporting in GAMING OPERATIONS and Accounts Payable in GAMING ESTABLISHMENTS

## The 2009 training program from COKALA Tax Group

### AGENDA

#### First Day of the Program: Focus on Accounts Payable

- Is the payment reportable? Learn what must be reported on Forms 1099-MISC and 1042-S
- Who is your payee? Learn the federal rules, and practical advice, for documenting payees on Forms W-9, and for foreign persons Forms 8233 and the W-8s
- How to recognize documentation that could be a problem, and what to do about it
- Is 28% federal backup withholding required?
- Is 30% federal withholding on foreign persons required?
- Is your payee exempt from reporting?
- Is your payee exempt from withholding?
- What is required to be reported on Form 1099-MISC? It may be more than you initially expect.
- Which payments are exempt from Form 1099-MISC reporting?
- Getting a good Name and TIN from the payee to avoid IRS B-Notices
- Handling B-Notices if despite your best efforts you receive them
- What must be reported on IRS Form 1042-S?
- Depositing withheld federal tax, and tracking transcripts to make sure it is properly credited by the IRS
- Filing Forms 1099-MISC and 1042-S
- Filing Forms 945 and 1042



#### Second Day: Gaming Operations

- What must be reported on Form W-2G
- What must be reported on 1099-MISC
- Documentation required from U.S. individuals
- FinCEN, Bank Secrecy Act, and Anti-Money Laundering rules
- When are winnings considered paid? Rules for actual and constructive receipt
- Reporting for winners who choose an annuity instead of lump-sum payment
- Reporting base for gambling winnings, including casino table games, sweepstakes, lotteries, wagering pools, raffles,
- Applying the 25% Regular Gambling rule and the 28% backup withholding rule for tax withholding
- Reporting base for bingo and slots; reporting base for keno; card tournaments
- Fundamental Form W-2G reporting rules and procedures; Form 5754
- Noncash winnings and Fair Market Value calculation; how to apply withholding
- Form 1099-MISC reporting of prizes without wager, including drawings, promos, contests, club member awards, and tournament prizes when no entry fee was paid
- Documentation required from non-U.S. individuals
- Winnings exempt from reporting for foreign players; regulations and tax treaties
- Canadian winners, withholding, and how they can file for refund of tax withheld
- Fundamental Form 1042-S reporting rules and procedures for foreign winners
- Depositing tax withheld from winnings; tracking transcripts to make sure it is properly credited by the IRS
- Filing the Forms 945 and 1042 year-end reports of withheld tax

## Choose from 3 locations in 2009:

- San Jose CA, June 24-25
- St Louis MO, July 15-16
- Windsor CT, Sept. 23-24

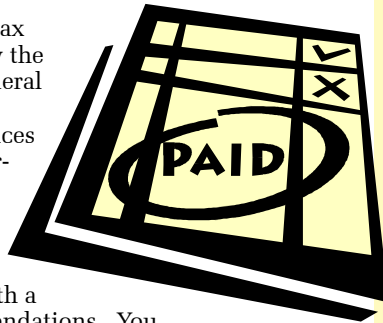


**Hotel Information:**  
Please see [www.cokala.com](http://www.cokala.com) for information about the hotel at which each program will be held.

### About COKALA Tax Information Reporting Solutions

COKALA is an advisory services firm offering experienced and practical help to meet your federal and state tax obligations for identifying and reporting the people and companies you pay. We help organizations work with, and avoid risk exposure on, tax issues that are high priorities for enforcement today by the Internal Revenue Service, other departments of the federal government, and state governments. Tax compliance training programs like this one are just one of the services provided by the COKALA group. We also provide year-round advisory support by subscription; custom tax training on site or by web/audio connection; consultation on new tax regulatory developments or issues of special importance in your organization; and

compliance assessments with a written report and recommendations. You can see much more about COKALA at [www.cokala.com](http://www.cokala.com), or we invite you to give us a call at 734.396.9041.



**Don't wait for an IRS audit to spotlight these costly issues! Attend this new program for expert and practical training that will help you and protect your organization.**

## Who Should Attend?

You can attend the complete 2-day program, or attend just one day if your responsibilities are limited to either Gaming or Accounts Payable. CPE Credits: 15 for the 2-day program; 7.5 for one day.

### 2-Day Seminar

For Controllers, Tax Manager/Director, Accounting Managers and Accountants, Auditors and everyone who needs to understand the full scope of what is reportable on Forms W-2G, 1099 and 1042-S, and what your obligations are for withholding U.S. tax on different types of payments.

### First Day only: Accounts Payable

The Accounts Payable segment can be attended separately on the first day. Ideal for Accounts Payable Managers, Supervisors and support staff, Procurement/Purchasing, Contracting.

### Second Day only: Gaming

The Gaming Operations segment can be attended separately on the second day. Ideal for Cashier, Cash Services, Check Cashing, Vault and Cage Managers and support staff.

*If you would like to send 4 or more people to this training program, ask about special discounts.*

## Support After the Seminar is Included at No Extra Charge

This is a lively program with many opportunities to ask questions during class and at lunch and refreshment breaks. But for your additional questions, which always come up after you return to the office and begin applying what you have learned, your instructor, Jerri Langer, will continue to support you by email. And in addition, we will send email bulletins to you so you can keep up with changes as they happen.

# TAX WITHHOLDING & REPORTING IN GAMING OPERATIONS AND ACCOUNTS PAYABLE IN GAMING ESTABLISHMENTS

Register today for this tax training program that will give you solid skills to handle Form W-2G, Form 1099, and Form 1042-S tax reporting and withholding requirements in the demanding environment of gaming establishments and their related entertainment, restaurant or hotel operations. This course has been updated for 2009 and prepared specifically for gaming, particularly for tribal gaming enterprises.

**San Jose, California • June 24 and 25, 2009**

**St Louis, Missouri • July 15 and 16, 2009**

**Windsor, Connecticut • September 23 and 24, 2009**

## Who Should Attend?

**2-Day Seminar:** Controllers, Tax Manager/Director, Accounting Managers and Accountants, and everyone who needs to understand the full scope of what is reportable on Forms W-2G, 1099 and 1042-S, and what your obligations are for withholding U.S. tax on different types of payments.

**First Day only:** Accounts Payable segment can be attended separately on the first day of the program. Ideal for Accounts Payable Managers, Supervisors and support staff, Procurement/Purchasing, Contracting.

**Second Day only:** Gaming Operations segment can be attended separately on the second day of the program. Ideal for Cashiers, Cash Services, Check Cashing, Vault and Cage Managers and support staff.

**Hotel Information:** Please see [www.cokala.com](http://www.cokala.com) for information about the hotel at which each program will be located.

## COKALA

TAX INFORMATION REPORTING SOLUTIONS, LLC

PO Box 2224, Ann Arbor MI 48106

[www.cokala.com](http://www.cokala.com) • email [info@cokala.com](mailto:info@cokala.com) if you have questions, or call us at 734.396.9041

Name \_\_\_\_\_

Company \_\_\_\_\_

Mailing Address \_\_\_\_\_  
\_\_\_\_\_

Telephone \_\_\_\_\_ Fax \_\_\_\_\_

Email \_\_\_\_\_

Location:  San Jose CA  St. Louis MO  Windsor CT

Registration fee:

- TWO-DAY training, combined program covering Accounts Payable in Gaming on the first day, and Gaming Operations on the second day  
 \$792.00 earlybird discount price if paid 45 days before program  
 \$880.00 standard registration
- ACCOUNTS PAYABLE in GAMING ESTABLISHMENTS training only, attend just the first day of the 2-day program  
 \$486.00 earlybird discount price if paid 45 days before program  
 \$540.00 standard registration
- GAMING OPERATIONS training only, attend just the second day  
 \$486.00 earlybird discount price if paid 45 days before program  
 \$540.00 standard registration

### PAYMENT:

Check enclosed payable to COKALA LLC

Invoice to (Name) \_\_\_\_\_ (Address) \_\_\_\_\_

Charge to credit card or purchasing card:  Visa  MasterCard  American Express Card # \_\_\_\_\_

Expiration Date \_\_\_\_\_ Signature of cardholder \_\_\_\_\_

Email of cardholder, if different from email of the registrant \_\_\_\_\_

Register for this training program by calling 734.396.9041 or at [www.cokala.com](http://www.cokala.com), or fax this form to 734.428.0702, or mail this form to COKALA Tax Information Reporting Solutions, LLC, at PO Box 2224, Ann Arbor, MI 48106.

If you have questions about the training program, please call us at 734.396.9041.